

STANDARD ARRIVAL CHART
INSTRUMENT(STAR) - ICAO

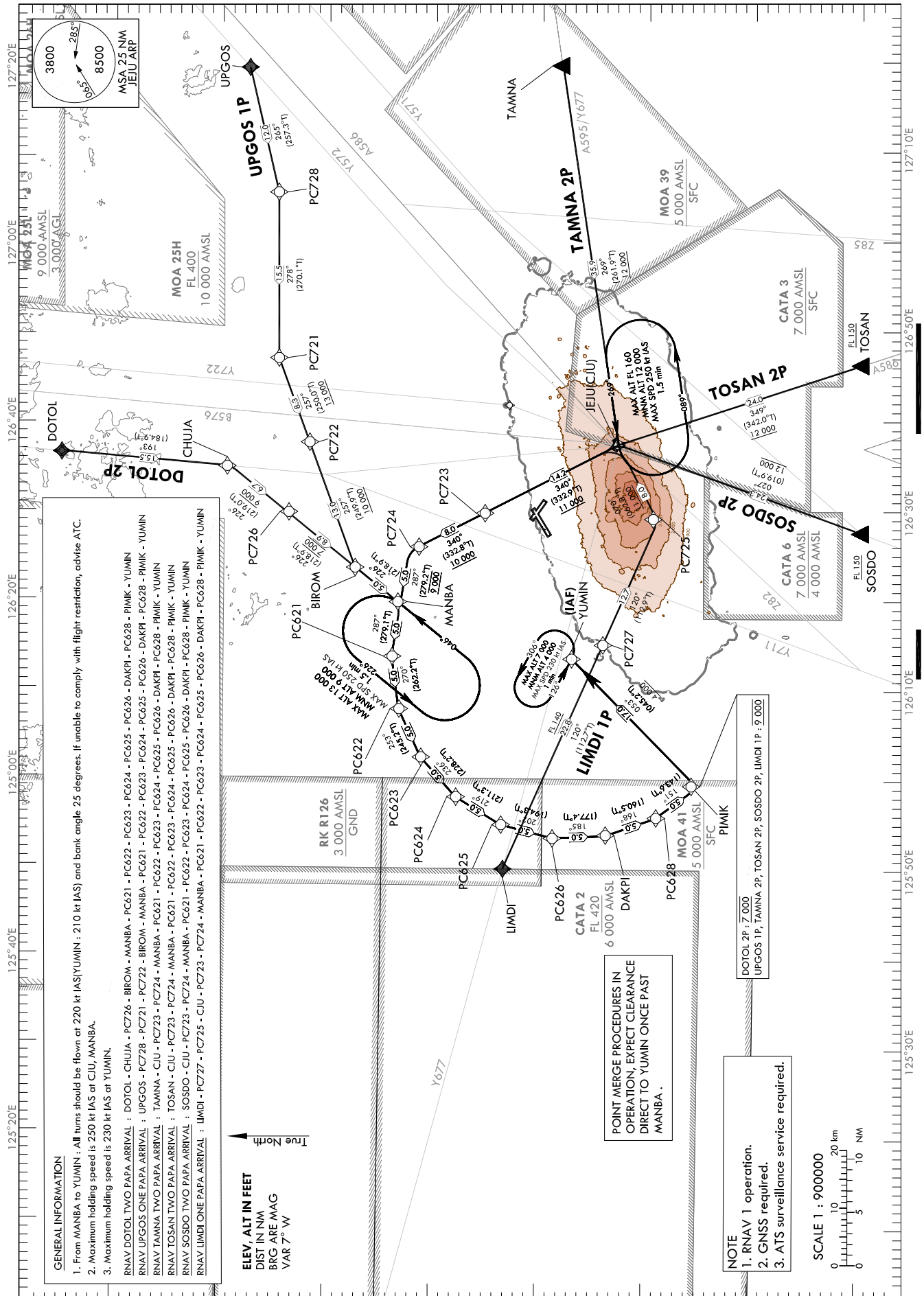
TRANSITION ALT 14 000
TRANSITION LVL FL 140

JEJU APP 121.2
JEJU TWR 124.05
JEJU TWR 118.2
JEJU TWR 118.55

JEJU/Jeju Intl(RKPC)

RWY 07
RNAV DOTOL 2P, RNAV UPGOS 1P
RNAV TAMNA 2P, RNAV TOSAN 2P
RNAV SOSDO 2P, RNAV LIMDI 1P

Note : Arrival under ICAO Flight Procedures.



Change : Withdrawal of IPDAS, KAMIT and PANSI.

Standard Instrument Arrival Procedure Coding Tables

RNAV DOTOL 2P

Serial Number	Path Descriptor	Waypoint Identifier	Fly-over	Course/Track °M(T)	Distance (NM)	Turn direction	Altitude (ft)	Speed (kt)	Coordinates	VPA/RDH	Navigation specification	Remarks
001	IF	DOTOL	-	-	-	-	-	-	34°15'15.4"N 126°36'36.6"E	-	RNAV 1	-
002	TF	CHUJA	-	193(184.9)	15.5	-	-	-	33°59'47.3"N 126°35'00.2"E	-	RNAV 1	-
003	TF	PC726	-	226(219.0)	6.7	-	-9 000	-	33°54'32.2"N 126°29'54.4"E	-	RNAV 1	-
004	TF	BIROM	-	226(218.9)	8.9	-	@7 000	-	33°47'33.9"N 126°23'09.8"E	-	RNAV 1	-
005	TF	MANBA	-	226(218.9)	5.0	-	-	@220	33°43'39.9"N 126°19'24.0"E	-	RNAV 1	Bank angle 25°
006	TF	PC621	-	287(279.1)	5.0	-	-	@220	33°44'27.4"N 126°13'28.9"E	-	RNAV 1	Bank angle 25°
007	TF	PC622	-	270(262.2)	5.0	-	-	@220	33°43'46.4"N 126°07'32.6"E	-	RNAV 1	Bank angle 25°
008	TF	PC623	-	253(245.2)	5.0	-	-	@220	33°41'40.2"N 126°02'06.2"E	-	RNAV 1	Bank angle 25°
009	TF	PC624	-	236(228.2)	5.0	-	-	@220	33°38'19.9"N 125°57'38.2"E	-	RNAV 1	Bank angle 25°
010	TF	PC625	-	219(211.3)	5.0	-	-	@220	33°34'03.1"N 125°54'31.8"E	-	RNAV 1	Bank angle 25°
011	TF	PC626	-	202(194.3)	5.0	-	-	@220	33°29'11.9"N 125°53'02.9"E	-	RNAV 1	Bank angle 25°
012	TF	DAKPI	-	185(177.4)	5.0	-	-	@220	33°24'11.7"N 125°53'19.1"E	-	RNAV 1	Bank angle 25°
013	TF	PC628	-	168(160.5)	5.0	-	-	@220	33°19'28.4"N 125°55'18.5"E	-	RNAV 1	Bank angle 25°
014	TF	PIWIK	-	151(143.6)	5.0	-	@9 000	@220	33°15'26.4"N 125°58'50.7"E	-	RNAV 1	Bank angle 25°
015	TF	YUMIN	-	053(045.2)	17.0	-	+4 000	@210	33°27'25.7"N 126°13'15.5"E	-	RNAV 1	IAF

RNAV UPPOS 1P

Serial Number	Path Descriptor	Waypoint Identifier	Fly-over	Course/Track °M(T)	Distance (NM)	Turn direction	Altitude (ft)	Speed (kt)	Coordinates	VPA/RDH	Navigation specification	Remarks
001	IF	UPPOS	-	-	-	-	-	-	33°57'33.3"N 127°19'53.0"E	-	RNAV 1	-
002	TF	PC728	-	265(257.3)	12.0	-	-	-	33°54'53.8"N 127°05'49.0"E	-	RNAV 1	-
003	TF	PC721	-	278(270.1)	15.5	-	-	-	33°54'53.3"N 126°47'09.7"E	-	RNAV 1	-
004	TF	PC722	-	257(250.0)	8.3	-	+13 000	-	33°52'02.9"N 126°37'48.9"E	-	RNAV 1	-
005	TF	BIROM	-	257(249.9)	13.0	-	+10 000	-	33°47'33.9"N 126°23'09.8"E	-	RNAV 1	-
006	TF	MANBA	-	226(218.9)	5.0	-	@9 000	@220	33°43'39.9"N 126°19'24.0"E	-	RNAV 1	Bank angle 25°
007	TF	PC621	-	287(279.1)	5.0	-	-	@220	33°44'27.4"N 126°13'28.9"E	-	RNAV 1	Bank angle 25°
008	TF	PC622	-	270(262.2)	5.0	-	-	@220	33°43'46.4"N 126°07'32.6"E	-	RNAV 1	Bank angle 25°
009	TF	PC623	-	253(245.2)	5.0	-	-	@220	33°41'40.2"N 126°02'06.2"E	-	RNAV 1	Bank angle 25°
010	TF	PC624	-	236(228.2)	5.0	-	-	@220	33°38'19.9"N 125°57'38.2"E	-	RNAV 1	Bank angle 25°
011	TF	PC625	-	219(211.3)	5.0	-	-	@220	33°34'03.1"N 125°54'31.8"E	-	RNAV 1	Bank angle 25°
012	TF	PC626	-	202(194.3)	5.0	-	-	@220	33°29'11.9"N 125°53'02.9"E	-	RNAV 1	Bank angle 25°
013	TF	DAKPI	-	185(177.4)	5.0	-	-	@220	33°24'11.7"N 125°53'19.1"E	-	RNAV 1	Bank angle 25°
014	TF	PC628	-	168(160.5)	5.0	-	-	@220	33°19'28.4"N 125°55'18.5"E	-	RNAV 1	Bank angle 25°
015	TF	PIWIK	-	151(143.6)	5.0	-	@9 000	@220	33°15'26.4"N 125°58'50.7"E	-	RNAV 1	Bank angle 25°
016	TF	YUMIN	-	053(045.2)	17.0	-	+4 000	@210	33°27'25.7"N 126°13'15.5"E	-	RNAV 1	IAF

JEJU/Jeju Intl(RKPC)
RWY 07

RNAV TAMNA 2P, RNAV TOSAN 2P

AERONAUTICAL DATA TABULATION

Standard Instrument Arrival Procedure Coding Tables

RNAV TAMNA 2P

Serial Number	Path Descriptor	Waypoint Identifier	Fly-over	Course/Track °M/(°T)	Distance (NM)	Turn direction	Altitude (ft)	Speed (kt)	Coordinates	VPA/ RDH	Navigation specification	Remarks
001	IF	TAMNA	-	-	-	-	-	-	33°28'15.5"N 127°19'53.0"E	-	RNAV 1	-
002	TF	CJU	-	269(261.9)	35.9	-	+12 000	-	33°23'04.6"N 126°37'26.8"E	-	RNAV 1	-
003	TF	PC723	-	340(332.9)	14.2	-	+11 000	-	33°35'44.3"N 126°29'41.9"E	-	RNAV 1	-
004	TF	PC724	-	340(332.8)	8.0	-	+10 000	-	33°42'52.0"N 126°25'19.1"E	-	RNAV 1	-
005	TF	MANBA	-	287(279.2)	5.0	-	@9 000	@220	33°43'39.9"N 126°19'24.0"E	-	RNAV 1	Bank angle 25°
006	TF	PC621	-	287(279.1)	5.0	-	-	@220	33°44'27.4"N 126°13'28.9"E	-	RNAV 1	Bank angle 25°
007	TF	PC622	-	270(262.2)	5.0	-	-	@220	33°43'46.4"N 126°07'32.6"E	-	RNAV 1	Bank angle 25°
008	TF	PC623	-	253(245.2)	5.0	-	-	@220	33°41'40.2"N 126°02'06.2"E	-	RNAV 1	Bank angle 25°
009	TF	PC624	-	236(228.2)	5.0	-	-	@220	33°38'19.9"N 125°57'38.2"E	-	RNAV 1	Bank angle 25°
010	TF	PC625	-	219(211.3)	5.0	-	-	@220	33°34'03.1"N 125°54'31.8"E	-	RNAV 1	Bank angle 25°
011	TF	PC626	-	202(194.3)	5.0	-	-	@220	33°29'11.9"N 125°53'02.9"E	-	RNAV 1	Bank angle 25°
012	TF	DAKPI	-	185(177.4)	5.0	-	-	@220	33°24'11.7"N 125°53'19.1"E	-	RNAV 1	Bank angle 25°
013	TF	PC628	-	168(160.5)	5.0	-	-	@220	33°19'28.4"N 125°55'18.5"E	-	RNAV 1	Bank angle 25°
014	TF	PIMIK	-	151(143.6)	5.0	-	@9 000	@220	33°15'26.4"N 125°58'50.7"E	-	RNAV 1	Bank angle 25°
015	TF	YUMIN	-	053(045.2)	17.0	-	+4 000	@210	33°27'25.7"N 126°13'15.5"E	-	RNAV 1	IAF

RNAV TOSAN 2P

Serial Number	Path Descriptor	Waypoint Identifier	Fly-over	Course/Track °M/(°T)	Distance (NM)	Turn direction	Altitude (ft)	Speed (kt)	Coordinates	VPA/ RDH	Navigation specification	Remarks
001	IF	TOSAN	-	-	-	-	+FL 150	-	33°00'12.0"N 126°46'18.7"E	-	RNAV 1	-
002	TF	CJU	-	349(342.0)	24.0	-	+12 000	-	33°23'04.6"N 126°37'26.8"E	-	RNAV 1	-
003	TF	PC723	-	340(332.9)	14.2	-	+11 000	-	33°35'44.3"N 126°29'41.9"E	-	RNAV 1	-
004	TF	PC724	-	340(332.8)	8.0	-	+10 000	-	33°42'52.0"N 126°25'19.1"E	-	RNAV 1	-
005	TF	MANBA	-	287(279.2)	5.0	-	@9 000	@220	33°43'39.9"N 126°19'24.0"E	-	RNAV 1	Bank angle 25°
006	TF	PC621	-	287(279.1)	5.0	-	-	@220	33°44'27.4"N 126°13'28.9"E	-	RNAV 1	Bank angle 25°
007	TF	PC622	-	270(262.2)	5.0	-	-	@220	33°43'46.4"N 126°07'32.6"E	-	RNAV 1	Bank angle 25°
008	TF	PC623	-	253(245.2)	5.0	-	-	@220	33°41'40.2"N 126°02'06.2"E	-	RNAV 1	Bank angle 25°
009	TF	PC624	-	236(228.2)	5.0	-	-	@220	33°38'19.9"N 125°57'38.2"E	-	RNAV 1	Bank angle 25°
010	TF	PC625	-	219(211.3)	5.0	-	-	@220	33°34'03.1"N 125°54'31.8"E	-	RNAV 1	Bank angle 25°
011	TF	PC626	-	202(194.3)	5.0	-	-	@220	33°29'11.9"N 125°53'02.9"E	-	RNAV 1	Bank angle 25°
012	TF	DAKPI	-	185(177.4)	5.0	-	-	@220	33°24'11.7"N 125°53'19.1"E	-	RNAV 1	Bank angle 25°
013	TF	PC628	-	168(160.5)	5.0	-	-	@220	33°19'28.4"N 125°55'18.5"E	-	RNAV 1	Bank angle 25°
014	TF	PIMIK	-	151(143.6)	5.0	-	@9 000	@220	33°15'26.4"N 125°58'50.7"E	-	RNAV 1	Bank angle 25°
015	TF	YUMIN	-	053(045.2)	17.0	-	+4 000	@210	33°27'25.7"N 126°13'15.5"E	-	RNAV 1	IAF

Change : Amended phrase(VPA/RDH).

JEJU/Jeju Intl(RKPC)
RWY 07

RNAV SOSDO 2P, RNAV LIMDI 1P

AERONAUTICAL DATA TABULATION

Standard Instrument Arrival Procedure Coding Tables

RNAV SOSDO 2P												
Serial Number	Path Descriptor	Waypoint Identifier	Fly-over	Course/Track °M(T)	Distance (NM)	Turn direction	Altitude (ft)	Speed (kt)	Coordinates	VPA/ RDH	Navigation specification	Remarks
001	IF	SOSDO	-	-	-	-	+FL 150	-	33°00'12.0"N 126°27'35.0"E	-	RNAV 1	-
002	TF	CJU	-	027(019.9)	24.3	-	+12 000	-	33°23'04.6"N 126°37'26.8"E	-	RNAV 1	-
003	TF	PC723	-	340(332.9)	14.2	-	+11 000	-	33°35'44.3"N 126°29'41.9"E	-	RNAV 1	-
004	TF	PC724	-	340(332.8)	8.0	-	+10 000	-	33°42'52.0"N 126°25'19.1"E	-	RNAV 1	-
005	TF	MANBA	-	287(279.2)	5.0	-	@9 000	@220	33°43'39.9"N 126°19'24.0"E	-	RNAV 1	Bank angle 25°
006	TF	PC621	-	287(279.1)	5.0	-	-	@220	33°44'27.4"N 126°13'28.9"E	-	RNAV 1	Bank angle 25°
007	TF	PC622	-	270(262.2)	5.0	-	-	@220	33°43'46.4"N 126°07'32.6"E	-	RNAV 1	Bank angle 25°
008	TF	PC623	-	253(245.2)	5.0	-	-	@220	33°41'40.2"N 126°02'06.2"E	-	RNAV 1	Bank angle 25°
009	TF	PC624	-	236(228.2)	5.0	-	-	@220	33°38'19.9"N 125°57'38.2"E	-	RNAV 1	Bank angle 25°
010	TF	PC625	-	219(211.3)	5.0	-	-	@220	33°34'03.1"N 125°54'31.8"E	-	RNAV 1	Bank angle 25°
011	TF	PC626	-	202(194.3)	5.0	-	-	@220	33°29'11.9"N 125°53'02.9"E	-	RNAV 1	Bank angle 25°
012	TF	DAKPI	-	185(177.4)	5.0	-	-	@220	33°24'11.7"N 125°53'19.1"E	-	RNAV 1	Bank angle 25°
013	TF	PC628	-	168(160.5)	5.0	-	-	@220	33°19'28.4"N 125°55'18.5"E	-	RNAV 1	Bank angle 25°
014	TF	PIMIK	-	151(143.6)	5.0	-	@9 000	@220	33°15'26.4"N 125°58'50.7"E	-	RNAV 1	Bank angle 25°
015	TF	YUMIN	-	053(045.2)	17.0	-	+4 000	@210	33°27'25.7"N 126°13'15.5"E	-	RNAV 1	IAF

RNAV LIMDI 1P												
Serial Number	Path Descriptor	Waypoint Identifier	Fly-over	Course/Track °M(T)	Distance (NM)	Turn direction	Altitude (ft)	Speed (kt)	Coordinates	VPA/ RDH	Navigation specification	Remarks
001	IF	LIMDI	-	-	-	-	-	-	33°33'13.3"N 125°49'53.0"E	-	RNAV 1	-
002	TF	PC727	-	120(112.7)	22.8	-	+FL 140	-	33°24'23.2"N 126°14'58.9"E	-	RNAV 1	-
003	TF	PC725	-	120(112.9)	12.7	-	-	-	33°19'25.2"N 126°28'56.9"E	-	RNAV 1	-
004	TF	CJU	-	070(062.8)	8.0	-	+11 000	-	33°23'04.6"N 126°37'26.8"E	-	RNAV 1	-
005	TF	PC723	-	340(332.9)	14.2	-	+11 000	-	33°35'44.3"N 126°29'41.9"E	-	RNAV 1	-
006	TF	PC724	-	340(332.8)	8.0	-	+10 000	-	33°42'52.0"N 126°25'19.1"E	-	RNAV 1	-
007	TF	MANBA	-	287(279.2)	5.0	-	@9 000	@220	33°43'39.9"N 126°19'24.0"E	-	RNAV 1	Bank angle 25°
008	TF	PC621	-	287(279.1)	5.0	-	-	@220	33°44'27.4"N 126°13'28.9"E	-	RNAV 1	Bank angle 25°
009	TF	PC622	-	270(262.2)	5.0	-	-	@220	33°43'46.4"N 126°07'32.6"E	-	RNAV 1	Bank angle 25°
010	TF	PC623	-	253(245.2)	5.0	-	-	@220	33°41'40.2"N 126°02'06.2"E	-	RNAV 1	Bank angle 25°
011	TF	PC624	-	236(228.2)	5.0	-	-	@220	33°38'19.9"N 125°57'38.2"E	-	RNAV 1	Bank angle 25°
012	TF	PC625	-	219(211.3)	5.0	-	-	@220	33°34'03.1"N 125°54'31.8"E	-	RNAV 1	Bank angle 25°
013	TF	PC626	-	202(194.3)	5.0	-	-	@220	33°29'11.9"N 125°53'02.9"E	-	RNAV 1	Bank angle 25°
014	TF	DAKPI	-	185(177.4)	5.0	-	-	@220	33°24'11.7"N 125°53'19.1"E	-	RNAV 1	Bank angle 25°
015	TF	PC628	-	168(160.5)	5.0	-	-	@220	33°19'28.4"N 125°55'18.5"E	-	RNAV 1	Bank angle 25°
016	TF	PIMIK	-	151(143.6)	5.0	-	@9 000	@220	33°15'26.4"N 125°58'50.7"E	-	RNAV 1	Bank angle 25°
017	TF	YUMIN	-	053(045.2)	17.0	-	+4 000	@210	33°27'25.7"N 126°13'15.5"E	-	RNAV 1	IAF

Change : Amended phrase(VPA/RDH).

AERONAUTICAL DATA TABULATION

Standard Instrument Arrival Procedure Coding Tables

HOLDING PROCEDURE										VPA/ RDH	Navigation specification	Remarks
Holding Identification	Path Descriptor	Waypoint Identifier	Fly- over	Course/Track °M(°T)	Time (min)	Turn direction	Altitude (ft)	Speed (kt)	Coordinates			
RNAV DOTOL 2P	HM	MANBA	Y	046(038.9)	1.5	L	-13 000 +9 000	-250	33°43'39.9"N 126°19'24.0"E	-	RNAV 1	-
	HM	YUMIN	Y	126(118.3)	1.0	L	-7 000 +4 000	-230	33°27'25.7"N 126°13'15.5"E	-	RNAV 1	-
RNAV UPGOS 1P	HM	MANBA	Y	046(038.9)	1.5	L	-13 000 +9 000	-250	33°43'39.9"N 126°19'24.0"E	-	RNAV 1	-
	HM	YUMIN	Y	126(118.3)	1.0	L	-7 000 +4 000	-230	33°27'25.7"N 126°13'15.5"E	-	RNAV 1	-
RNAV TAMNA 2P	HM	CJU	Y	269(261.9)	1.5	L	-FL 160 +12 000	-250	33°23'04.6"N 126°37'26.8"E	-	RNAV 1	-
	HM	MANBA	Y	046(038.9)	1.5	L	-13 000 +9 000	-250	33°43'39.9"N 126°19'24.0"E	-	RNAV 1	-
	HM	YUMIN	Y	126(118.3)	1.0	L	-7 000 +4 000	-230	33°27'25.7"N 126°13'15.5"E	-	RNAV 1	-
	HM	CJU	Y	269(261.9)	1.5	L	-FL 160 +12 000	-250	33°23'04.6"N 126°37'26.8"E	-	RNAV 1	-
RNAV SOSDO 2P	HM	MANBA	Y	046(038.9)	1.5	L	-13 000 +9 000	-250	33°43'39.9"N 126°19'24.0"E	-	RNAV 1	-
	HM	YUMIN	Y	126(118.3)	1.0	L	-7 000 +4 000	-230	33°27'25.7"N 126°13'15.5"E	-	RNAV 1	-
	HM	CJU	Y	269(261.9)	1.5	L	-FL 160 +12 000	-250	33°23'04.6"N 126°37'26.8"E	-	RNAV 1	-
	HM	MANBA	Y	046(038.9)	1.5	L	-13 000 +9 000	-250	33°43'39.9"N 126°19'24.0"E	-	RNAV 1	-
RNAV LUMDI 1P	HM	MANBA	Y	046(038.9)	1.5	L	-13 000 +9 000	-250	33°43'39.9"N 126°19'24.0"E	-	RNAV 1	-
	HM	YUMIN	Y	126(118.3)	1.0	L	-7 000 +4 000	-230	33°27'25.7"N 126°13'15.5"E	-	RNAV 1	-

Change : Amended phrase(VPA/TCH → VPA/RDH).

INTENTIONALLY

LEFT

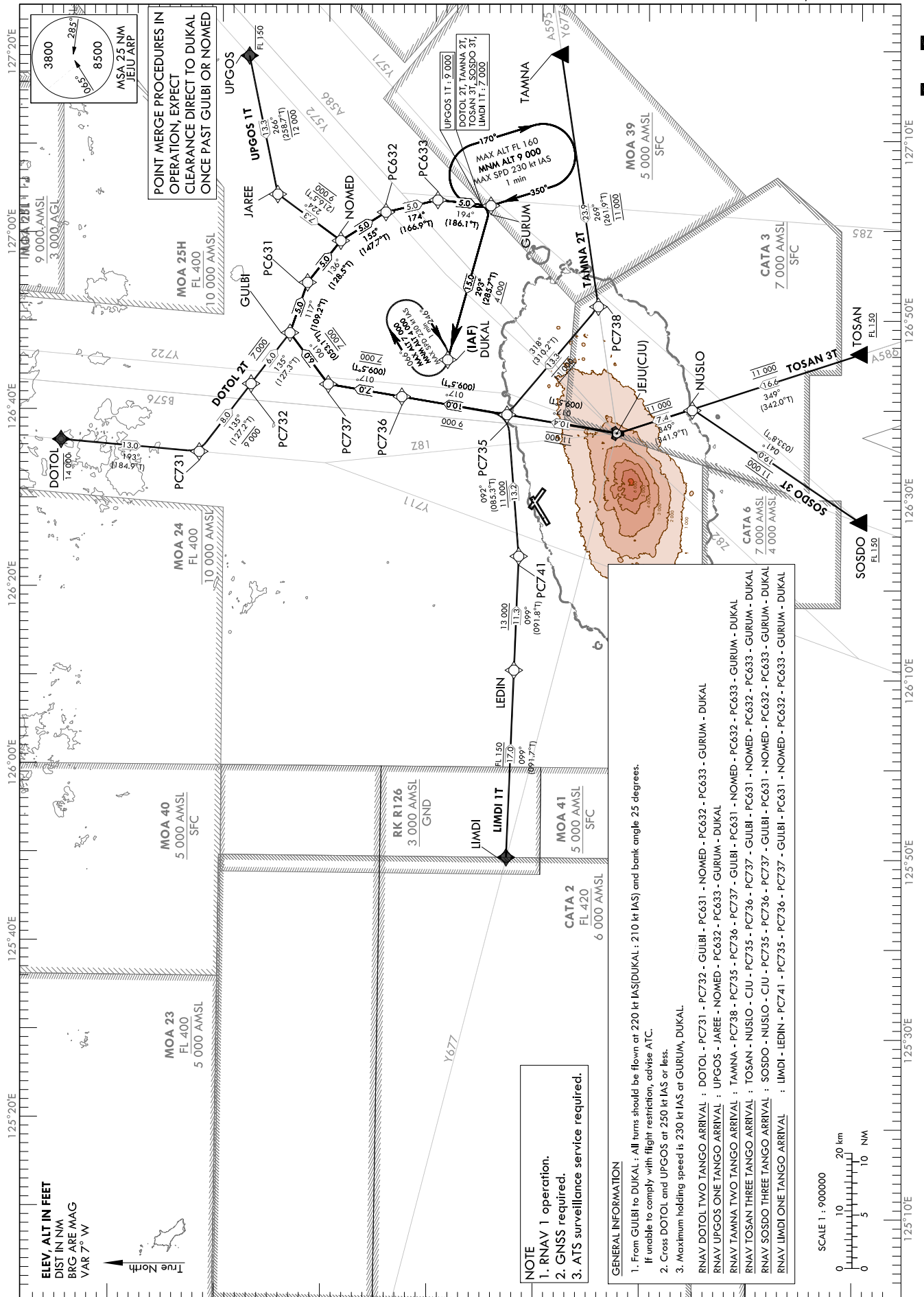
BLANK

TRANSITION ALT 14 000
TRANSITION LVL FL 140

JEJU APP	121.2
	124.05
JEJU TWR	118.2
	118.55

JEJU/Jeju Intl(RKPC)
RWY 25
RNAV DOTOL 2T, RNAV UPGOS 1T
RNAV TAMNA 2T, RNAV TOSAN 3T
RNAV SOSDO 3T, RNAV LIMDI 1T

Note : Arrival under ICAO Flight Procedures.



Change : Amended phrases(TOSAN 2T → 3T, SOSDO 2T → 3T).

AERONAUTICAL DATA TABULATION

Standard Instrument Arrival Procedure Coding Tables

RNAV DOTOL 2T

Serial Number	Path Descriptor	Waypoint Identifier	Fly-over	Course/Track °M(°T)	Distance (NM)	Turn direction	Altitude (ft)	Speed (kt)	Coordinates	VPA/RDH	Navigation specification	Remarks
001	IF	DOTOL	-	-	-	-	-14 000	-250	34°15'15.4"N 126°36'36.6"E	-	RNAV 1	-
002	TF	PC731	-	193(184.9)	13.0	-	-	-	34°02'17.0"N 126°35'15.7"E	-	RNAV 1	-
003	TF	PC732	-	135(127.2)	8.0	-	-9 000	-	33°57'26.0"N 126°42'55.3"E	-	RNAV 1	-
004	TF	GULBI	-	135(127.3)	6.0	-	@7 000	@220	33°53'47.5"N 126°48'39.5"E	-	RNAV 1	Bank angle 25°
005	TF	PC631	-	117(109.2)	5.0	-	-	@220	33°52'08.3"N 126°54'19.7"E	-	RNAV 1	Bank angle 25°
006	TF	NOMED	-	136(128.5)	5.0	-	-	@220	33°49'01.2"N 126°59'01.5"E	-	RNAV 1	Bank angle 25°
007	TF	PC632	-	155(147.7)	5.0	-	-	@220	33°44'47.1"N 127°02'13.7"E	-	RNAV 1	Bank angle 25°
008	TF	PC633	-	174(166.9)	5.0	-	-	@220	33°39'54.3"N 127°03'35.0"E	-	RNAV 1	Bank angle 25°
009	TF	GURUM	-	194(186.1)	5.0	-	@7 000	@220	33°34'55.5"N 127°02'56.6"E	-	RNAV 1	Bank angle 25°
010	TF	DUKAL	-	293(285.7)	15.0	-	+4 000	@210	33°38'58.6"N 126°45'38.8"E	-	RNAV 1	IAF

RNAV UPGOS 1T

Serial Number	Path Descriptor	Waypoint Identifier	Fly-over	Course/Track °M(°T)	Distance (NM)	Turn direction	Altitude (ft)	Speed (kt)	Coordinates	VPA/RDH	Navigation specification	Remarks
001	IF	UPGOS	-	-	-	-	-FL 150	-250	33°57'33.3"N 127°19'53.0"E	-	RNAV 1	-
002	TF	JAREE	-	266(258.7)	13.3	-	-12 000	-	33°54'56.0"N 127°04'15.7"E	-	RNAV 1	-
003	TF	NOMED	-	224(216.5)	7.3	-	@9 000	@220	33°49'01.2"N 126°59'01.5"E	-	RNAV 1	Bank angle 25°
004	TF	PC632	-	155(147.7)	5.0	-	-	@220	33°44'47.1"N 127°02'13.7"E	-	RNAV 1	Bank angle 25°
005	TF	PC633	-	174(166.9)	5.0	-	-	@220	33°39'54.3"N 127°03'35.0"E	-	RNAV 1	Bank angle 25°
006	TF	GURUM	-	194(186.1)	5.0	-	@9 000	@220	33°34'55.5"N 127°02'56.6"E	-	RNAV 1	Bank angle 25°
007	TF	DUKAL	-	293(285.7)	15.0	-	+4 000	@210	33°38'58.6"N 126°45'38.8"E	-	RNAV 1	IAF

JEJU/Jeju Intl(RKPC)
RWY 25

RNAV TAMNA 2T, RNAV TOSAN 3T

AERONAUTICAL DATA TABULATION

Standard Instrument Arrival Procedure Coding Tables

RNAV TAMNA 2T

Serial Number	Path Descriptor	Waypoint Identifier	Fly-over	Course/Track °M(T)	Distance (NM)	Turn direction	Altitude (ft)	Speed (kt)	Coordinates	VPA/RDH	Navigation specification	Remarks
001	IF	TAMNA	-	-	-	-	-	-	33°28'15.5"N 127°19'53.0"E	-	RNAV 1	-
002	TF	PC738	-	269(261.9)	23.9	-	@11 000	-	33°24'50.2"N 126°51'37.6"E	-	RNAV 1	-
003	TF	PC735	-	318(310.2)	13.3	-	@11 000	-	33°33'23.5"N 126°39'30.8"E	-	RNAV 1	-
004	TF	PC736	-	017(009.5)	10.0	-	-9 000	-	33°43'16.3"N 126°41'29.9"E	-	RNAV 1	-
005	TF	PC737	-	017(009.5)	7.0	-	@7 000	-	33°50'11.3"N 126°42'53.5"E	-	RNAV 1	-
006	TF	GULBI	-	061(053.1)	6.0	-	-	@220	33°53'47.5"N 126°48'39.5"E	-	RNAV 1	Bank angle 25°
007	TF	PC631	-	117(109.2)	5.0	-	-	@220	33°52'08.3"N 126°54'19.7"E	-	RNAV 1	Bank angle 25°
008	TF	NOMED	-	136(128.5)	5.0	-	-	@220	33°49'01.2"N 126°59'01.5"E	-	RNAV 1	Bank angle 25°
009	TF	PC632	-	155(147.7)	5.0	-	-	@220	33°44'47.1"N 127°02'13.7"E	-	RNAV 1	Bank angle 25°
010	TF	PC633	-	174(166.9)	5.0	-	-	@220	33°39'54.3"N 127°03'35.0"E	-	RNAV 1	Bank angle 25°
011	TF	GURUM	-	194(186.1)	5.0	-	@7 000	@220	33°34'55.5"N 127°02'56.6"E	-	RNAV 1	Bank angle 25°
012	TF	DUKAL	-	293(285.7)	15.0	-	+4 000	@210	33°38'58.6"N 126°45'38.8"E	-	RNAV 1	IAF

RNAV TOSAN 3T

Serial Number	Path Descriptor	Waypoint Identifier	Fly-over	Course/Track °M(T)	Distance (NM)	Turn direction	Altitude (ft)	Speed (kt)	Coordinates	VPA/RDH	Navigation specification	Remarks
001	IF	TOSAN	-	-	-	-	+FL 150	-	33°00'12.0"N 126°46'18.7"E	-	RNAV 1	-
002	TF	NUSLO	-	349(342.0)	16.6	-	@11 000	-	33°16'00.2"N 126°40'11.8"E	-	RNAV 1	-
003	TF	CJU	-	349(341.9)	7.4	-	@11 000	-	33°23'04.6"N 126°37'26.8"E	-	RNAV 1	-
004	TF	PC735	-	017(009.5)	10.4	-	@11 000	-	33°33'23.5"N 126°39'30.8"E	-	RNAV 1	-
005	TF	PC736	-	017(009.5)	10.0	-	-9 000	-	33°43'16.3"N 126°41'29.9"E	-	RNAV 1	-
006	TF	PC737	-	017(009.5)	7.0	-	@7 000	-	33°50'11.3"N 126°42'53.5"E	-	RNAV 1	-
007	TF	GULBI	-	061(053.1)	6.0	-	-	@220	33°53'47.5"N 126°48'39.5"E	-	RNAV 1	Bank angle 25°
008	TF	PC631	-	117(109.2)	5.0	-	-	@220	33°52'08.3"N 126°54'19.7"E	-	RNAV 1	Bank angle 25°
009	TF	NOMED	-	136(128.5)	5.0	-	-	@220	33°49'01.2"N 126°59'01.5"E	-	RNAV 1	Bank angle 25°
010	TF	PC632	-	155(147.7)	5.0	-	-	@220	33°44'47.1"N 127°02'13.7"E	-	RNAV 1	Bank angle 25°
011	TF	PC633	-	174(166.9)	5.0	-	-	@220	33°39'54.3"N 127°03'35.0"E	-	RNAV 1	Bank angle 25°
012	TF	GURUM	-	194(186.1)	5.0	-	@7 000	@220	33°34'55.5"N 127°02'56.6"E	-	RNAV 1	Bank angle 25°
013	TF	DUKAL	-	293(285.7)	15.0	-	+4 000	@210	33°38'58.6"N 126°45'38.8"E	-	RNAV 1	IAF

Change : Information of standard instrument arrival procedure for RWY 25(RNAV TOSAN 2T → RNAV TOSAN 3T).

JEJU/Jeju Intl(RKPC)
RWY 25

RNAV SOSDO 3T, RNAV LIMDI 1T

AERONAUTICAL DATA TABULATION

Standard Instrument Arrival Procedure Coding Tables

RNAV SOSDO 3T

Serial Number	Path Descriptor	Waypoint Identifier	Fly-over	Course/Track °M(°T)	Distance (NM)	Turn direction	Altitude (ft)	Speed (kt)	Coordinates	VPA/RDH	Navigation specification	Remarks
001	IF	SOSDO	-	-	-	-	+FL 150	-	33°00'12.0"N 126°27'35.0"E	-	RNAV 1	-
002	TF	NUSLO	-	041(033.8)	19.0	-	@11 000	-	33°16'00.2"N 126°40'11.8"E	-	RNAV 1	-
003	TF	CJU	-	349(341.9)	7.4	-	@11 000	-	33°23'04.6"N 126°37'26.8"E	-	RNAV 1	-
004	TF	PC735	-	017(009.5)	10.4	-	@11 000	-	33°33'23.5"N 126°39'30.8"E	-	RNAV 1	-
005	TF	PC736	-	017(009.5)	10.0	-	-9 000	-	33°43'16.3"N 126°41'29.9"E	-	RNAV 1	-
006	TF	PC737	-	017(009.5)	7.0	-	@7 000	-	33°50'11.3"N 126°42'53.5"E	-	RNAV 1	-
007	TF	GULBI	-	061(053.1)	6.0	-	-	@220	33°53'47.5"N 126°48'39.5"E	-	RNAV 1	Bank angle 25°
008	TF	PC631	-	117(109.2)	5.0	-	-	@220	33°52'08.3"N 126°54'19.7"E	-	RNAV 1	Bank angle 25°
009	TF	NOMED	-	136(128.5)	5.0	-	-	@220	33°49'01.2"N 126°59'01.5"E	-	RNAV 1	Bank angle 25°
010	TF	PC632	-	155(147.7)	5.0	-	-	@220	33°44'47.1"N 127°02'13.7"E	-	RNAV 1	Bank angle 25°
011	TF	PC633	-	174(166.9)	5.0	-	-	@220	33°39'54.3"N 127°03'35.0"E	-	RNAV 1	Bank angle 25°
012	TF	GURUM	-	194(186.1)	5.0	-	@7 000	@220	33°34'55.5"N 127°02'56.6"E	-	RNAV 1	Bank angle 25°
013	TF	DUKAL	-	293(285.7)	15.0	-	+4 000	@210	33°38'58.6"N 126°45'38.8"E	-	RNAV 1	IAF

RNAV LIMDI 1T

Serial Number	Path Descriptor	Waypoint Identifier	Fly-over	Course/Track °M(°T)	Distance (NM)	Turn direction	Altitude (ft)	Speed (kt)	Coordinates	VPA/RDH	Navigation specification	Remarks
001	IF	LIMDI	-	-	-	-	-	-	33°33'13.3"N 125°49'53.0"E	-	RNAV 1	-
002	TF	LEDIN	-	099(091.7)	17.0	-	+FL 150	-	33°32'42.1"N 126°10'14.9"E	-	RNAV 1	-
003	TF	PC741	-	099(091.8)	11.3	-	+13 000	-	33°32'19.6"N 126°23'42.6"E	-	RNAV 1	-
004	TF	PC735	-	092(085.3)	13.2	-	+11 000	-	33°33'23.5"N 126°39'30.8"E	-	RNAV 1	-
005	TF	PC736	-	017(009.5)	10.0	-	-9 000	-	33°43'16.3"N 126°41'29.9"E	-	RNAV 1	-
006	TF	PC737	-	017(009.5)	7.0	-	@7 000	-	33°50'11.3"N 126°42'53.5"E	-	RNAV 1	-
007	TF	GULBI	-	061(053.1)	6.0	-	-	@220	33°53'47.5"N 126°48'39.5"E	-	RNAV 1	Bank angle 25°
008	TF	PC631	-	117(109.2)	5.0	-	-	@220	33°52'08.3"N 126°54'19.7"E	-	RNAV 1	Bank angle 25°
009	TF	NOMED	-	136(128.5)	5.0	-	-	@220	33°49'01.2"N 126°59'01.5"E	-	RNAV 1	Bank angle 25°
010	TF	PC632	-	155(147.7)	5.0	-	-	@220	33°44'47.1"N 127°02'13.7"E	-	RNAV 1	Bank angle 25°
011	TF	PC633	-	174(166.9)	5.0	-	-	@220	33°39'54.3"N 127°03'35.0"E	-	RNAV 1	Bank angle 25°
012	TF	GURUM	-	194(186.1)	5.0	-	@7 000	@220	33°34'55.5"N 127°02'56.6"E	-	RNAV 1	Bank angle 25°
013	TF	DUKAL	-	293(285.7)	15.0	-	+4 000	@210	33°38'58.6"N 126°45'38.8"E	-	RNAV 1	IAF

Change : Information of standard instrument arrival procedure for RWY 25(RNAV SOSDO 2T → RNAV SOSDO 3T).

JEJU/Jeju Intl(RKPC)
RWY 25
HOLDING PROCEDURE

AERONAUTICAL DATA TABULATION

Standard Instrument Arrival Procedure Coding Tables

HOLDING PROCEDURE	Holding Identification	Path Descriptor	Waypoint Identifier	Fly-over	Course/Track °M(°T)	Time (min)	Turn direction	Altitude (ft)	Speed (kt)	Coordinates	VPA/RDH	Navigation specification	Remarks
■	RNAV DOTOL 2T	HM	GURUM	Y	350 (342.8)	1.0	R	-FL 160 +9 000	-230	33°34'55.5"N 127°02'56.6"E	-	RNAV 1	-
		HM	DUKAL	Y	246 (238.6)	1.0	R	-7 000 +4 000	-230	33°38'58.6"N 126°45'38.8"E	-	RNAV 1	-
		HM	GURUM	Y	350 (342.8)	1.0	R	-FL 160 +9 000	-230	33°34'55.5"N 127°02'56.6"E	-	RNAV 1	-
■	RNAV UPGOS 1T	HM	DUKAL	Y	246 (238.6)	1.0	R	-7 000 +4 000	-230	33°38'58.6"N 126°45'38.8"E	-	RNAV 1	-
		HM	GURUM	Y	350 (342.8)	1.0	R	-FL 160 +9 000	-230	33°34'55.5"N 127°02'56.6"E	-	RNAV 1	-
		HM	DUKAL	Y	246 (238.6)	1.0	R	-7 000 +4 000	-230	33°38'58.6"N 126°45'38.8"E	-	RNAV 1	-
■	RNAV TOSAN 2T	HM	GURUM	Y	350 (342.8)	1.0	R	-FL 160 +9 000	-230	33°34'55.5"N 127°02'56.6"E	-	RNAV 1	-
		HM	DUKAL	Y	246 (238.6)	1.0	R	-7 000 +4 000	-230	33°38'58.6"N 126°45'38.8"E	-	RNAV 1	-
		HM	GURUM	Y	350 (342.8)	1.0	R	-FL 160 +9 000	-230	33°34'55.5"N 127°02'56.6"E	-	RNAV 1	-
■	RNAV TOSAN 3T	HM	GURUM	Y	350 (342.8)	1.0	R	-FL 160 +9 000	-230	33°34'55.5"N 127°02'56.6"E	-	RNAV 1	-
		HM	DUKAL	Y	246 (238.6)	1.0	R	-7 000 +4 000	-230	33°38'58.6"N 126°45'38.8"E	-	RNAV 1	-
		HM	GURUM	Y	350 (342.8)	1.0	R	-FL 160 +9 000	-230	33°34'55.5"N 127°02'56.6"E	-	RNAV 1	-
■	RNAV SOSDO 3T	HM	DUKAL	Y	246 (238.6)	1.0	R	-7 000 +4 000	-230	33°38'58.6"N 126°45'38.8"E	-	RNAV 1	-
		HM	GURUM	Y	350 (342.8)	1.0	R	-FL 160 +9 000	-230	33°34'55.5"N 127°02'56.6"E	-	RNAV 1	-
		HM	DUKAL	Y	246 (238.6)	1.0	R	-7 000 +4 000	-230	33°38'58.6"N 126°45'38.8"E	-	RNAV 1	-
■	RNAV LIMDI 1T	HM	GURUM	Y	350 (342.8)	1.0	R	-FL 160 +9 000	-230	33°34'55.5"N 127°02'56.6"E	-	RNAV 1	-
		HM	DUKAL	Y	246 (238.6)	1.0	R	-7 000 +4 000	-230	33°38'58.6"N 126°45'38.8"E	-	RNAV 1	-
		HM	GURUM	Y	350 (342.8)	1.0	R	-FL 160 +9 000	-230	33°34'55.5"N 127°02'56.6"E	-	RNAV 1	-

Change : Information of standard instrument arrival procedure for RWY 25(RNAV MAKET 2T → RNAV UPGOS 1T, TOSAN 2T → 3T, SOSDO 2T → 3T).

INTENTIONALLY

LEFT

BLANK

STANDARD ARRIVAL CHART
INSTRUMENT(STAR) - ICAO

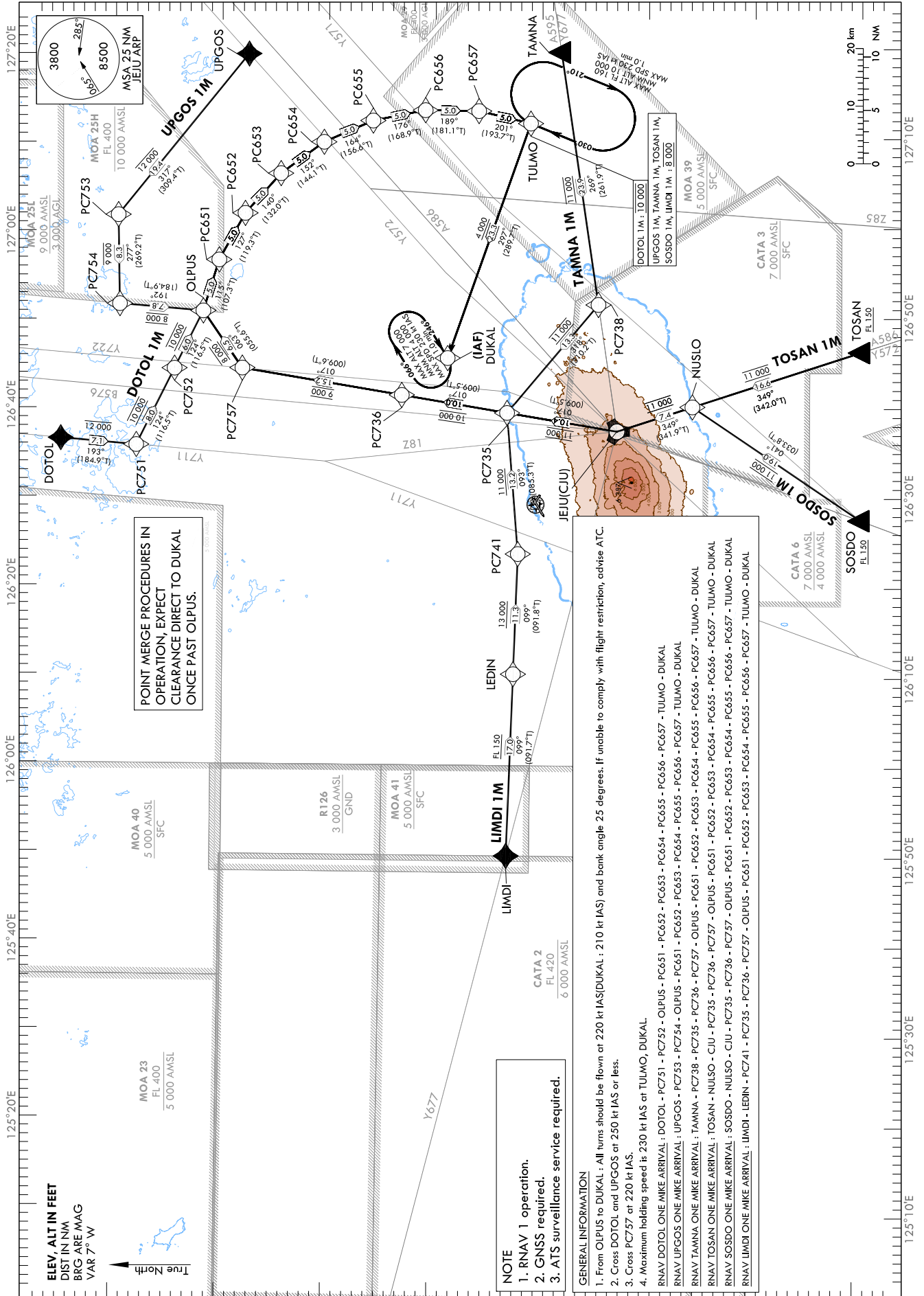
TRANSITION ALT 14 000
TRANSITION LVL FL 140

JEJU APP 121.2
124.05
JEJU TWR 118.2
118.55

JEJU/Jeju Intl(RKPC)

RWY 25
RNAV DOTOL 1M, RNAV UPGOS 1M
RNAV TAMNA 1M, RNAV TOSAN 1M
RNAV SOSDO 1M, RNAV LIMDI 1M

Note : Arrival under ICAO Flight Procedures.



Change : Withdrawal of IPDAS, KAMIT, GUSU, MAKET, AKPON, BILUM, ATINA, BEPKO, MANOL, PAPLU, LOSNI, OMKIM, PANSI and Amended phrases.

JEJU/Jeju Intl(RKPC)
RWY 25

RNAV DOTOL 1M, RNAV UPGOS 1M

AERONAUTICAL DATA TABULATION

Standard Instrument Arrival Procedure Coding Tables

RNAV DOTOL 1M												
Serial Number	Path Descriptor	Waypoint Identifier	Fly-over	Course/Track °M(T)	Distance (NM)	Turn direction	Altitude (ft)	Speed (kt)	Coordinates	VPA/ RDH	Navigation specification	Remarks
001	IF	DOTOL	-	-	-	-	-	-250	34°15'15.4"N 126°36'36.6"E	-	RNAV 1	-
002	TF	PC751	-	193(184.9)	7.1	-	-12 000	-	34°08'10.4"N 126°35'52.4"E	-	RNAV 1	-
003	TF	PC752	-	124(116.5)	8.0	-	@10 000	-	34°04'35.8"N 126°44'29.7"E	-	RNAV 1	-
004	TF	OLPUS	-	124(116.5)	6.0	-	@10 000	@220	34°01'54.3"N 126°50'57.4"E	-	RNAV 1	Bank angle 25°
005	TF	PC651	-	115(107.3)	5.0	-	-	@220	34°00'25.0"N 126°56'42.0"E	-	RNAV 1	Bank angle 25°
006	TF	PC652	-	127(119.3)	5.0	-	-	@220	33°57'57.6"N 127°01'56.4"E	-	RNAV 1	Bank angle 25°
007	TF	PC653	-	140(132.0)	5.0	-	-	@220	33°54'36.6"N 127°06'24.4"E	-	RNAV 1	Bank angle 25°
008	TF	PC654	-	152(144.1)	5.0	-	-	@220	33°50'33.1"N 127°09'55.7"E	-	RNAV 1	Bank angle 25°
009	TF	PC655	-	164(156.6)	5.0	-	-	@220	33°45'57.1"N 127°12'18.3"E	-	RNAV 1	Bank angle 25°
010	TF	PC656	-	176(168.9)	5.0	-	-	@220	33°41'02.2"N 127°13'27.4"E	-	RNAV 1	Bank angle 25°
011	TF	PC657	-	189(181.1)	5.0	-	-	@220	33°36'01.7"N 127°13'20.4"E	-	RNAV 1	Bank angle 25°
012	TF	TULWO	-	201(193.7)	5.0	-	@10 000	@220	33°31'09.6"N 127°11'55.6"E	-	RNAV 1	Bank angle 25°
013	TF	DUKAL	-	297(289.7)	23.3	-	+4 000	@210	33°38'58.6"N 126°45'38.8"E	-	RNAV 1	IAF

RNAV UPGOS 1M												
Serial Number	Path Descriptor	Waypoint Identifier	Fly-over	Course/Track °M(T)	Distance (NM)	Turn direction	Altitude (ft)	Speed (kt)	Coordinates	VPA/ RDH	Navigation specification	Remarks
001	IF	UPGOS	-	-	-	-	-	-250	33°57'33.3"N 127°19'53.0"E	-	RNAV 1	-
002	TF	PC753	-	317(309.4)	19.4	-	-12 000	-	34°09'51.6"N 127°01'48.1"E	-	RNAV 1	-
003	TF	PC754	-	277(269.2)	8.3	-	-9 000	-	34°09'44.0"N 126°51'45.5"E	-	RNAV 1	Bank angle 25°
004	TF	OLPUS	-	192(184.9)	7.8	-	@8 000	@220	34°01'54.3"N 126°50'57.4"E	-	RNAV 1	Bank angle 25°
005	TF	PC651	-	115(107.3)	5.0	-	-	@220	34°00'25.0"N 126°56'42.0"E	-	RNAV 1	Bank angle 25°
006	TF	PC652	-	127(119.3)	5.0	-	-	@220	33°57'57.6"N 127°01'56.4"E	-	RNAV 1	Bank angle 25°
007	TF	PC653	-	140(132.0)	5.0	-	-	@220	33°54'36.6"N 127°06'24.4"E	-	RNAV 1	Bank angle 25°
008	TF	PC654	-	152(144.1)	5.0	-	-	@220	33°50'33.1"N 127°09'55.7"E	-	RNAV 1	Bank angle 25°
009	TF	PC655	-	164(156.6)	5.0	-	-	@220	33°45'57.1"N 127°12'18.3"E	-	RNAV 1	Bank angle 25°
010	TF	PC656	-	176(168.9)	5.0	-	-	@220	33°41'02.2"N 127°13'27.4"E	-	RNAV 1	Bank angle 25°
011	TF	PC657	-	189(181.1)	5.0	-	-	@220	33°36'01.7"N 127°13'20.4"E	-	RNAV 1	Bank angle 25°
012	TF	TULWO	-	201(193.7)	5.0	-	@8 000	@220	33°31'09.6"N 127°11'55.6"E	-	RNAV 1	Bank angle 25°
013	TF	DUKAL	-	297(289.7)	23.3	-	+4 000	@210	33°38'58.6"N 126°45'38.8"E	-	RNAV 1	IAF

JEJU/Jeju Intl(RKPC)
RWY 25

RNAV TAMNA 1M, RNAV TOSAN 1M

AERONAUTICAL DATA TABULATION

Standard Instrument Arrival Procedure Coding Tables

RNAV TAMNA 1M												
Serial Number	Path Descriptor	Waypoint Identifier	Fly-over	Course/Track °M(°T)	Distance (NM)	Turn direction	Altitude (ft)	Speed (kt)	Coordinates	VPA/ RDH	Navigation specification	Remarks
001	IF	TAMNA	-	-	-	-	-	-	33°28'15.5"N 127°19'53.0"E	-	RNAV 1	-
002	TF	PC738	-	269(261.9)	23.9	-	@11 000	-	33°24'50.2"N 126°51'37.6"E	-	RNAV 1	-
003	TF	PC735	-	318(310.2)	13.3	-	@11 000	-	33°33'23.5"N 126°39'30.8"E	-	RNAV 1	-
004	TF	PC736	-	017(009.5)	10.0	-	@10 000	-	33°43'16.3"N 126°41'29.9"E	-	RNAV 1	-
005	TF	PC757	-	017(009.6)	15.2	-	@9 000	@220	33°58'14.3"N 126°44'31.7"E	-	RNAV 1	-
006	TF	OLPUS	-	063(055.6)	6.5	-	@8 000	@220	34°01'54.3"N 126°50'57.4"E	-	RNAV 1	Bank angle 25°
007	TF	PC651	-	115(107.3)	5.0	-	-	@220	34°00'25.0"N 126°56'42.0"E	-	RNAV 1	Bank angle 25°
008	TF	PC652	-	127(119.3)	5.0	-	-	@220	33°57'57.6"N 127°01'56.4"E	-	RNAV 1	Bank angle 25°
009	TF	PC653	-	140(132.0)	5.0	-	-	@220	33°54'36.6"N 127°06'24.4"E	-	RNAV 1	Bank angle 25°
010	TF	PC654	-	152(144.1)	5.0	-	-	@220	33°50'33.1"N 127°09'55.7"E	-	RNAV 1	Bank angle 25°
011	TF	PC655	-	164(156.6)	5.0	-	-	@220	33°45'57.1"N 127°12'18.3"E	-	RNAV 1	Bank angle 25°
012	TF	PC656	-	176(168.9)	5.0	-	-	@220	33°41'02.2"N 127°13'27.4"E	-	RNAV 1	Bank angle 25°
013	TF	PC657	-	189(181.1)	5.0	-	-	@220	33°36'01.7"N 127°13'20.4"E	-	RNAV 1	Bank angle 25°
014	TF	TULMO	-	201(193.7)	5.0	-	@8 000	@220	33°31'09.6"N 127°11'55.6"E	-	RNAV 1	Bank angle 25°
015	TF	DUKAL	-	297(289.7)	23.3	-	+4 000	@210	33°38'58.6"N 126°45'38.8"E	-	RNAV 1	IAF

RNAV TOSAN 1M												
Serial Number	Path Descriptor	Waypoint Identifier	Fly-over	Course/Track °M(°T)	Distance (NM)	Turn direction	Altitude (ft)	Speed (kt)	Coordinates	VPA/ RDH	Navigation specification	Remarks
001	IF	TOSAN	-	-	-	-	+FL 150	-	33°00'12.0"N 126°46'18.7"E	-	RNAV 1	-
002	TF	NUSLO	-	349(342.0)	16.6	-	@11 000	-	33°16'00.2"N 126°40'11.8"E	-	RNAV 1	-
003	TF	CIU	-	349(341.9)	7.4	-	@11 000	-	33°23'04.6"N 126°37'26.8"E	-	RNAV 1	-
004	TF	PC735	-	017(009.5)	10.4	-	@11 000	-	33°33'23.5"N 126°39'30.8"E	-	RNAV 1	-
005	TF	PC736	-	017(009.5)	10.0	-	@10 000	-	33°43'16.3"N 126°41'29.9"E	-	RNAV 1	-
006	TF	PC757	-	017(009.6)	15.2	-	@9 000	@220	33°58'14.3"N 126°44'31.7"E	-	RNAV 1	-
007	TF	OLPUS	-	063(055.6)	6.5	-	@8 000	@220	34°01'54.3"N 126°50'57.4"E	-	RNAV 1	Bank angle 25°
008	TF	PC651	-	115(107.3)	5.0	-	-	@220	34°00'25.0"N 126°56'42.0"E	-	RNAV 1	Bank angle 25°
009	TF	PC652	-	127(119.3)	5.0	-	-	@220	33°57'57.6"N 127°01'56.4"E	-	RNAV 1	Bank angle 25°
010	TF	PC653	-	140(132.0)	5.0	-	-	@220	33°54'36.6"N 127°06'24.4"E	-	RNAV 1	Bank angle 25°
011	TF	PC654	-	152(144.1)	5.0	-	-	@220	33°50'33.1"N 127°09'55.7"E	-	RNAV 1	Bank angle 25°
012	TF	PC655	-	164(156.6)	5.0	-	-	@220	33°45'57.1"N 127°12'18.3"E	-	RNAV 1	Bank angle 25°
013	TF	PC656	-	176(168.9)	5.0	-	-	@220	33°41'02.2"N 127°13'27.4"E	-	RNAV 1	Bank angle 25°
014	TF	PC657	-	189(181.1)	5.0	-	-	@220	33°36'01.7"N 127°13'20.4"E	-	RNAV 1	Bank angle 25°
015	TF	TULMO	-	201(193.7)	5.0	-	@8 000	@220	33°31'09.6"N 127°11'55.6"E	-	RNAV 1	Bank angle 25°
016	TF	DUKAL	-	297(289.7)	23.3	-	+4 000	@210	33°38'58.6"N 126°45'38.8"E	-	RNAV 1	IAF

Change : Establishment of standard instrument arrival procedures for RWY 25(RNAV TAMNA 1M, RNAV TOSAN 1M).

JEJU/Jeju Intl(RKPC)
RWY 25
RNAV SOSDO 1M, RNAV LIMDI 1M

AERONAUTICAL DATA TABULATION

Standard Instrument Arrival Procedure Coding Tables

RNAV SOSDO 1M												
Serial Number	Path Descriptor	Waypoint Identifier	Fly-over	Course/Track °M(°T)	Distance (NM)	Turn direction	Altitude (ft)	Speed (kt)	Coordinates	VPA/ RDH	Navigation specification	Remarks
001	IF	SOSDO	-	-	-	-	+FL 150	-	33°00'12.0"N 126°27'35.0"E	-	RNAV 1	-
002	TF	NUSLO	-	041(033.8)	19.0	-	@11 000	-	33°16'00.2"N 126°40'11.8"E	-	RNAV 1	-
003	TF	CJU	-	349(341.9)	7.4	-	@11 000	-	33°23'04.6"N 126°37'26.8"E	-	RNAV 1	-
004	TF	PC735	-	017(009.5)	10.4	-	@11 000	-	33°33'23.5"N 126°39'30.8"E	-	RNAV 1	-
005	TF	PC736	-	017(009.5)	10.0	-	@10 000	-	33°43'16.3"N 126°41'29.9"E	-	RNAV 1	-
006	TF	PC757	-	017(009.6)	15.2	-	@9 000	@220	33°58'14.3"N 126°44'31.7"E	-	RNAV 1	-
007	TF	OIPUS	-	063(055.6)	6.5	-	@8 000	@220	34°01'54.3"N 126°50'57.4"E	-	RNAV 1	Bank angle 25°
008	TF	PC651	-	115(107.3)	5.0	-	-	@220	34°00'25.0"N 126°56'42.0"E	-	RNAV 1	Bank angle 25°
009	TF	PC652	-	127(119.3)	5.0	-	-	@220	33°57'57.6"N 127°01'56.4"E	-	RNAV 1	Bank angle 25°
010	TF	PC653	-	140(132.0)	5.0	-	-	@220	33°54'36.6"N 127°06'24.4"E	-	RNAV 1	Bank angle 25°
011	TF	PC654	-	152(144.1)	5.0	-	-	@220	33°50'33.1"N 127°09'55.7"E	-	RNAV 1	Bank angle 25°
012	TF	PC655	-	164(156.6)	5.0	-	-	@220	33°45'57.1"N 127°12'18.3"E	-	RNAV 1	Bank angle 25°
013	TF	PC656	-	176(168.9)	5.0	-	-	@220	33°41'02.2"N 127°13'27.4"E	-	RNAV 1	Bank angle 25°
014	TF	PC657	-	189(181.1)	5.0	-	-	@220	33°36'01.7"N 127°13'20.4"E	-	RNAV 1	Bank angle 25°
015	TF	TULMO	-	201(193.7)	5.0	-	@8 000	@220	33°31'09.6"N 127°11'55.6"E	-	RNAV 1	Bank angle 25°
016	TF	DUKAL	-	297(289.7)	23.3	-	+4 000	@210	33°38'58.6"N 126°45'38.8"E	-	RNAV 1	IAF

RNAV LIMDI 1M												
Serial Number	Path Descriptor	Waypoint Identifier	Fly-over	Course/Track °M(°T)	Distance (NM)	Turn direction	Altitude (ft)	Speed (kt)	Coordinates	VPA/ RDH	Navigation specification	Remarks
001	IF	LIMDI	-	-	-	-	-	-	33°33'13.3"N 125°49'53.0"E	-	RNAV 1	-
002	TF	LEDIN	-	099(091.7)	17.0	-	+FL 150	-	33°32'42.1"N 126°10'14.9"E	-	RNAV 1	-
003	TF	PC741	-	099(091.8)	11.3	-	+13 000	-	33°32'19.6"N 126°23'42.6"E	-	RNAV 1	-
004	TF	PC735	-	093(085.3)	13.2	-	+11 000	-	33°33'23.5"N 126°39'30.8"E	-	RNAV 1	-
005	TF	PC736	-	017(009.5)	10.0	-	@10 000	-	33°43'16.3"N 126°41'29.9"E	-	RNAV 1	-
006	TF	PC757	-	017(009.6)	15.2	-	@9 000	@220	33°58'14.3"N 126°44'31.7"E	-	RNAV 1	-
007	TF	OIPUS	-	063(055.6)	6.5	-	@8 000	@220	34°01'54.3"N 126°50'57.4"E	-	RNAV 1	Bank angle 25°
008	TF	PC651	-	115(107.3)	5.0	-	-	@220	34°00'25.0"N 126°56'42.0"E	-	RNAV 1	Bank angle 25°
009	TF	PC652	-	127(119.3)	5.0	-	-	@220	33°57'57.6"N 127°01'56.4"E	-	RNAV 1	Bank angle 25°
010	TF	PC653	-	140(132.0)	5.0	-	-	@220	33°54'36.6"N 127°06'24.4"E	-	RNAV 1	Bank angle 25°
011	TF	PC654	-	152(144.1)	5.0	-	-	@220	33°50'33.1"N 127°09'55.7"E	-	RNAV 1	Bank angle 25°
012	TF	PC655	-	164(156.6)	5.0	-	-	@220	33°45'57.1"N 127°12'18.3"E	-	RNAV 1	Bank angle 25°
013	TF	PC656	-	176(168.9)	5.0	-	-	@220	33°41'02.2"N 127°13'27.4"E	-	RNAV 1	Bank angle 25°
014	TF	PC657	-	189(181.1)	5.0	-	-	@220	33°36'01.7"N 127°13'20.4"E	-	RNAV 1	Bank angle 25°
015	TF	TULMO	-	201(193.7)	5.0	-	@8 000	@220	33°31'09.6"N 127°11'55.6"E	-	RNAV 1	Bank angle 25°
016	TF	DUKAL	-	297(289.7)	23.3	-	+4 000	@210	33°38'58.6"N 126°45'38.8"E	-	RNAV 1	IAF

Change : Establishment of standard instrument arrival procedures for RWY 25(RNAV SOSDO 1M, RNAV LIMDI 1M).

JEJU/Jeju Intl(RKPC)
RWY 25
HOLDING PROCEDURE

AERONAUTICAL DATA TABULATION

Standard Instrument Arrival Procedure Coding Tables

HOLDING PROCEDURE		Path Descriptor	Waypoint Identifier	Fly- over	Course/Track °M(°T)	Time (min)	Turn direction	Altitude (ft)	Speed (kt)	Coordinates	VPA/ RDH	Navigation specification	Remarks
RNAV DOTOL 1M	HM	HM	TULMO	Y	030(022.5)	1.0	R	-FL160 +10 000	-230	33°31'09.6"N 127°11'55.6"E	-	RNAV 1	-
	HM	HM	DUKAL	Y	246(238.7)	1.0	R	-7 000 +4 000	-230	33°38'58.6"N 126°45'38.8"E	-	RNAV 1	-
RNAV UPGOS 1M	HM	HM	TULMO	Y	030(022.5)	1.0	R	-FL160 +10 000	-230	33°31'09.6"N 127°11'55.6"E	-	RNAV 1	-
	HM	HM	DUKAL	Y	246(238.7)	1.0	R	-7 000 +4 000	-230	33°38'58.6"N 126°45'38.8"E	-	RNAV 1	-
RNAV TAMNA 1M	HM	HM	TULMO	Y	030(022.5)	1.0	R	-FL160 +10 000	-230	33°31'09.6"N 127°11'55.6"E	-	RNAV 1	-
	HM	HM	DUKAL	Y	246(238.7)	1.0	R	-7 000 +4 000	-230	33°38'58.6"N 126°45'38.8"E	-	RNAV 1	-
RNAV TOSAN 1M	HM	HM	TULMO	Y	030(022.5)	1.0	R	-FL160 +10 000	-230	33°31'09.6"N 127°11'55.6"E	-	RNAV 1	-
	HM	HM	DUKAL	Y	246(238.7)	1.0	R	-7 000 +4 000	-230	33°38'58.6"N 126°45'38.8"E	-	RNAV 1	-
RNAV SOSDO 1M	HM	HM	TULMO	Y	030(022.5)	1.0	R	-FL160 +10 000	-230	33°31'09.6"N 127°11'55.6"E	-	RNAV 1	-
	HM	HM	DUKAL	Y	246(238.7)	1.0	R	-7 000 +4 000	-230	33°38'58.6"N 126°45'38.8"E	-	RNAV 1	-
RNAV LIMDI 1M	HM	HM	TULMO	Y	030(022.5)	1.0	R	-FL160 +10 000	-230	33°31'09.6"N 127°11'55.6"E	-	RNAV 1	-
	HM	HM	DUKAL	Y	246(238.7)	1.0	R	-7 000 +4 000	-230	33°38'58.6"N 126°45'38.8"E	-	RNAV 1	-

Change : Amended holding procedure.

INTENTIONALLY

LEFT

BLANK